



Instructions for CMEDIA Update No519/N0526/No585

Document Number: 070-90041

Revision: A.0

Last Date Changed: 06/01/2016

Page 1 of 5

Download the Firmware Update Utility

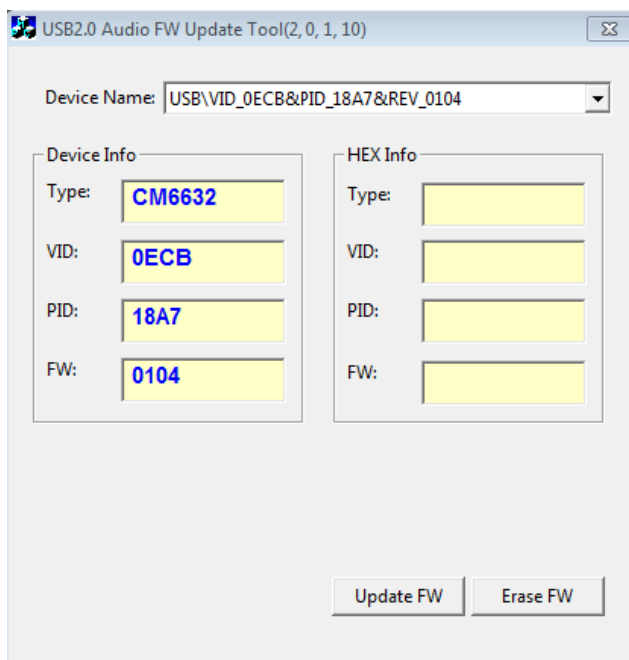
The Firmware Update Utility may be downloaded from the Mark Levinson Website.

Install the Firmware Update Utility on your Windows computer.

Check Current Firmware Version

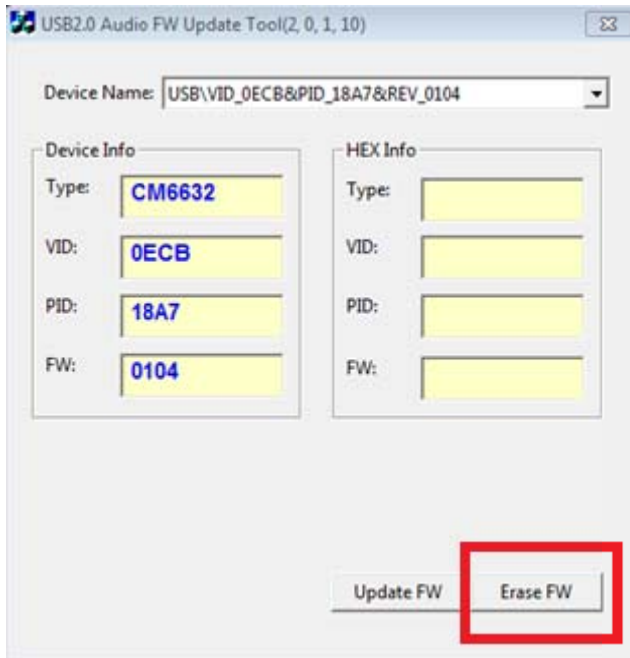
Connect your ML Product to your computer via USB, wait for your ML Product to be recognized by your computer.

Start the Firmware Update Utility.

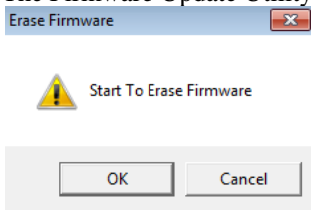


The Firmware Update Utility shows the current Firmware Version in the FW: box on the left, in this case 0104. The VID (Vendor ID) and PID (Product ID) are also shown. The Type window shows the device type that will be updated.

The existing firmware must be erased before new firmware can be installed. Click the Erase FW Button on the Firmware Update Tool.

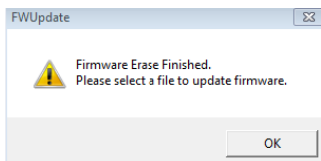


The Firmware Update Utility will ask for confirmation to erase the firmware, click the OK Button.



The Firmware Tool and USB Device will need to be restarted at this point, follow the instructions below.

Click OK to continue with the tool.



Close the firmware update tool by clicking on the red "X" in the top right corner of the tool.

Remove and Re-Insert (re-plug) the USB cable from the ML Product.

Wait for the computer's USB Driver to Re-Install, it will fail and indicate the driver was not installed properly; this is OK since the firmware is now erased.



Instructions for CMEDIA Update No519/N0526/No585

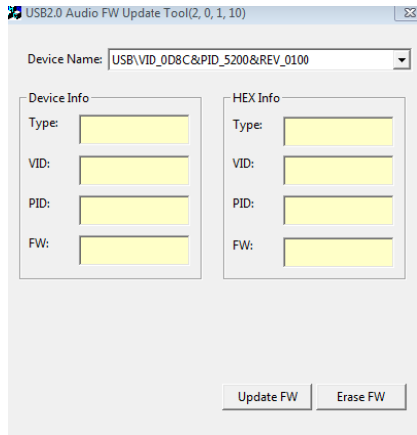
Document Number: 070-90041

Revision: A.0

Last Date Changed: 06/01/2016

Page 3 of 5

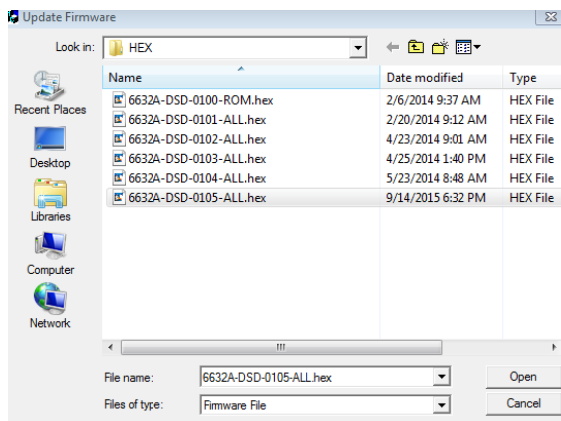
Restart the Firmware Update Tool.



This time there will be no information.



Click the Update Firmware Button.



Open the one file shown in the browser window if this is your first time updating. If you have done this before browse to the new firmware file that you downloaded.



Instructions for CMEDIA Update No519/N0526/No585

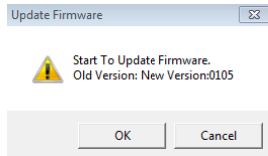
Document Number: 070-90041

Revision: A.0

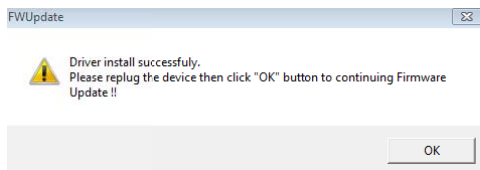
Last Date Changed: 06/01/2016

Page 4 of 5

Click OK to start the update.

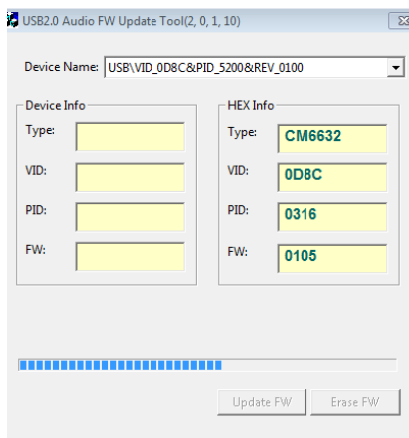


This will install a boot loader (driver) into the erased part, not the firmware.

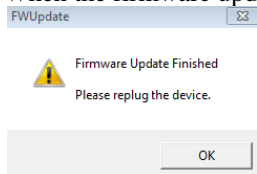


Once the boot loader (driver) is installed, re-plug the ML Product and click OK to install the firmware.

The firmware update progress is shown while the tool is updating the firmware.



When the firmware update is complete a confirmation window is displayed.

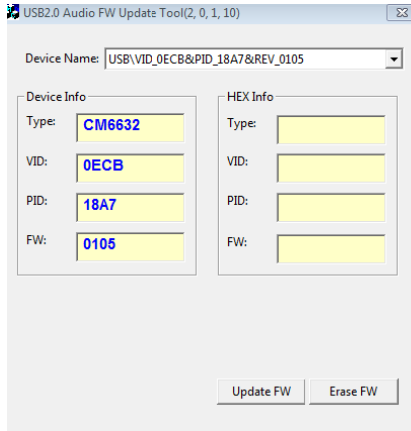


Re-plug the ML Product and then click OK.

Close the firmware update tool by clicking on the red "X" in the top right corner of the tool.

You are finished.

The Firmware Update Tool can be re-started to check the new that the new version is installed, but this is not necessary.



Close the firmware update tool by clicking on the red “X” in the top right corner of the tool.

